



Maximum Parking for
a Maxed Out World



Stack Parker

Series G 63 (horizontal)

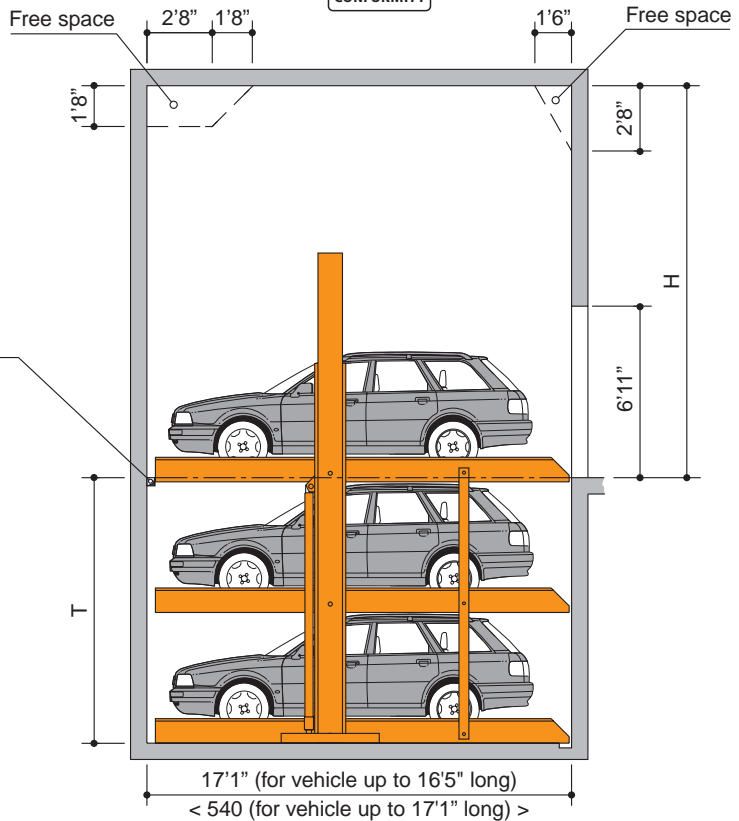
EB (single platform) = 3 vehicles
DB (double platform) = 6 vehicles



Basement Garage
Space requirements are minimum finished dimensions in inch

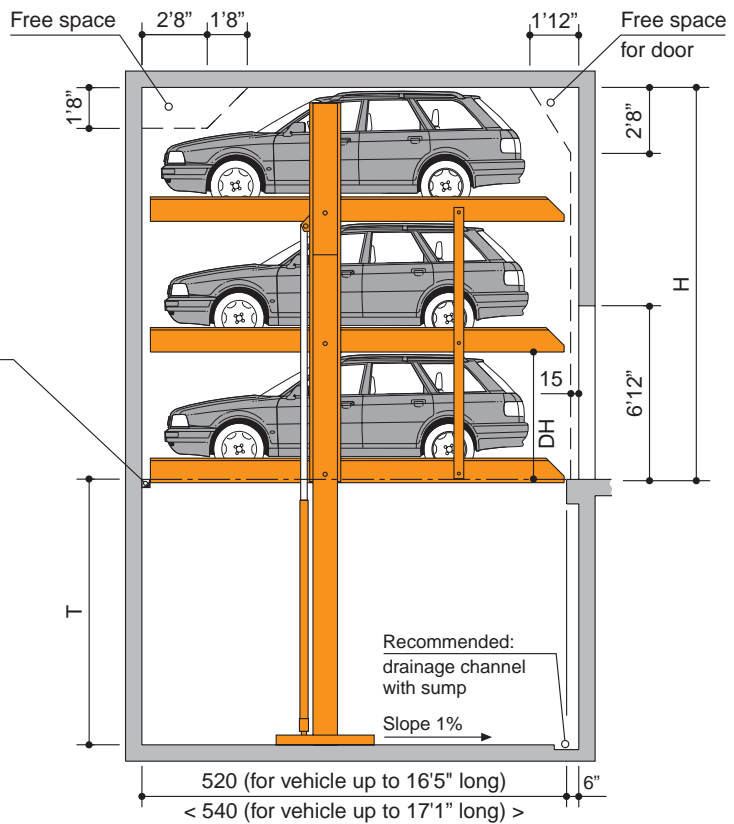
for dividing walls:
cutting through 10 x 10
(for duct for cables etc.) of
dividing wall

**Access to all
parking spaces
is horizontal**



**Garage with door
in front of the
car parking system**
Space requirements are minimum finished dimensions in inch

for dividing walls:
cutting through 10 x 10
(for duct for cables etc.) of
dividing wall



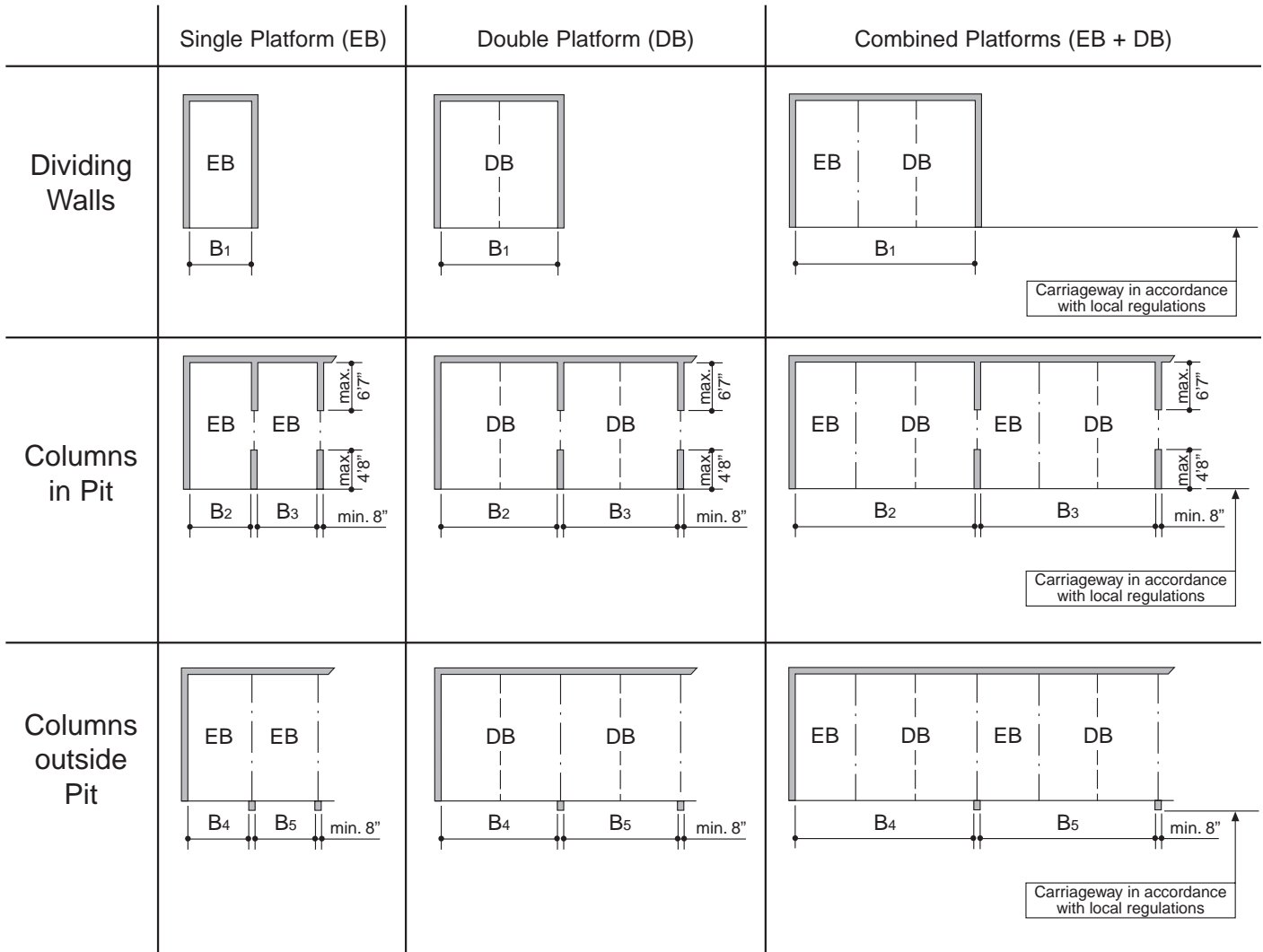
Type	T	H	DH	Suitable for	Maximum vehicle dimensions
G 63-480	10'10"	15'9"	5'2"	upper: } standard passenger vehicle middle: } and station wagon lower: }	Length 16'5" <17'1"> Height 4'12" Width 6'3" m Weight 2,000 kg Wheel load 500 kg

If dimension height "H" is increased by customer in comparison to dimension "H" as indicated, correspondingly higher vehicles may be parked on upper platforms!

Widths – Basement Garage

Series G 63-480

All space requirements are minimum finished dimensions in inch



	Usable Platform Width	Dividing Walls B ₁	Columns in Pit		Columns outside Pit	
			B ₂	B ₃	B ₄	B ₅
EB	7'7"	8'11"	8'7"	8'3"	8'7"	8'3"
	7'11"	9'3"	8'11"	8'7"	8'11"	8'7"
	8'3"	9'7"	9'3"	8'11"	9'3"	8'11"
DB	15'2"	16'6"	16'1"	15'9"	16'1"	15'9"
	15'5"	16'9"	16'6"	16'1"	16'6"	16'1"
	15'9"	17'1"	16'9"	16'6"	16'9"	16'6"
	16'1"	17'5"	17'1"	16'9"	17'1"	16'9"
	16'6"	17'9"	17'5"	17'1"	17'5"	17'1"
EB + DB (Example)	7'7" + 15'2"	25'4"	24'12"	24'8"	24'12"	24'8"
	7'11" + 15'5"	25'12"	25'8"	25'4"	25'8"	25'4"
	8'3" + 15'9"	26'7"	26'3"	25'12"	26'3"	25'12"
	8'3" + 16'6"	27'3"	26'11"	26'7"	26'11"	26'7"

Standard width = parking space width 7'7"

PLEASE NOTE:

- End parking spaces are generally more difficult to drive into. Therefore we recommend for end parking spaces our wider platforms.
- Parking on standard width platforms with larger vehicles may make getting into and out of the vehicle difficult. This depends on type of vehicle, approach and above all on the individual driver's skill.

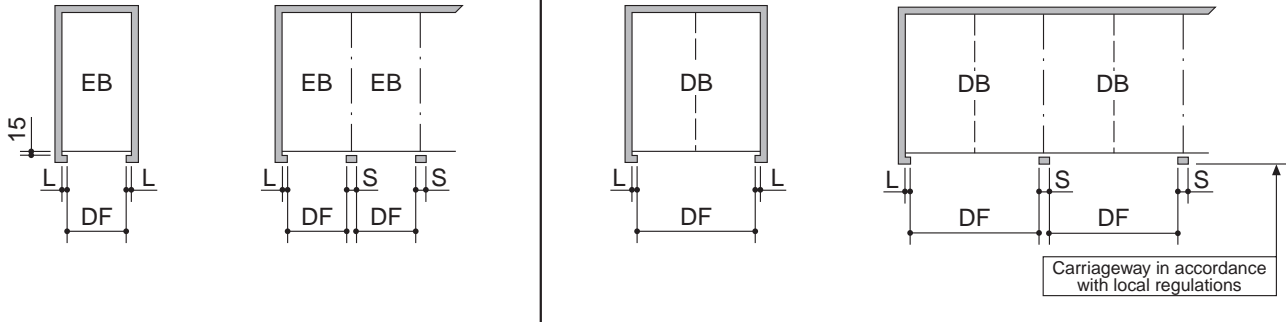
Widths – Garage with door in front of the car parking system

Series G 63-480

All space requirements are minimum finished dimensions in inch

Single Platform (EB)

Double Platform (DB)

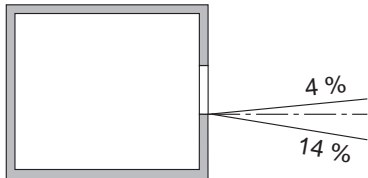


	Usable Platform Width	DF	L	S
EB	7'7"	7'10"	7"	12"
	7'11"	8'3"	6"	12"
	8'3"	8'3"	8"	1'4"
DB	15'2"	15'7"	5"	10"
	15'5"	15'7"	7"	14"
	15'9"	16'6"	5"	10"
	16'1"	16'6"	6"	12"
	16'6"	16'6"	8"	1'4"

DF = door entrance width

Door dimensions require coordination with door supplier.

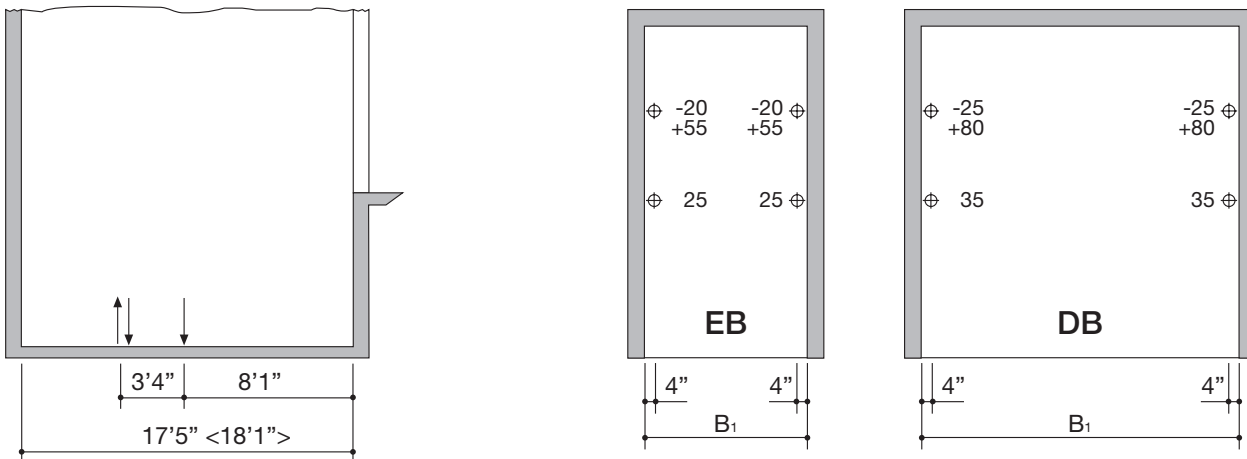
Approach



These illustrated maximum approach angles must **NOT** be exceeded. Incorrect approach angles will cause **SERIOUS MANOEUVRING & POSITIONING PROBLEMS** on the parking system for which the local agency of Klaus accepts no responsibility.

Load plan

forces in kN
dimensions in inch



Units are bolted to the floor. Drilling depth approx. 6"

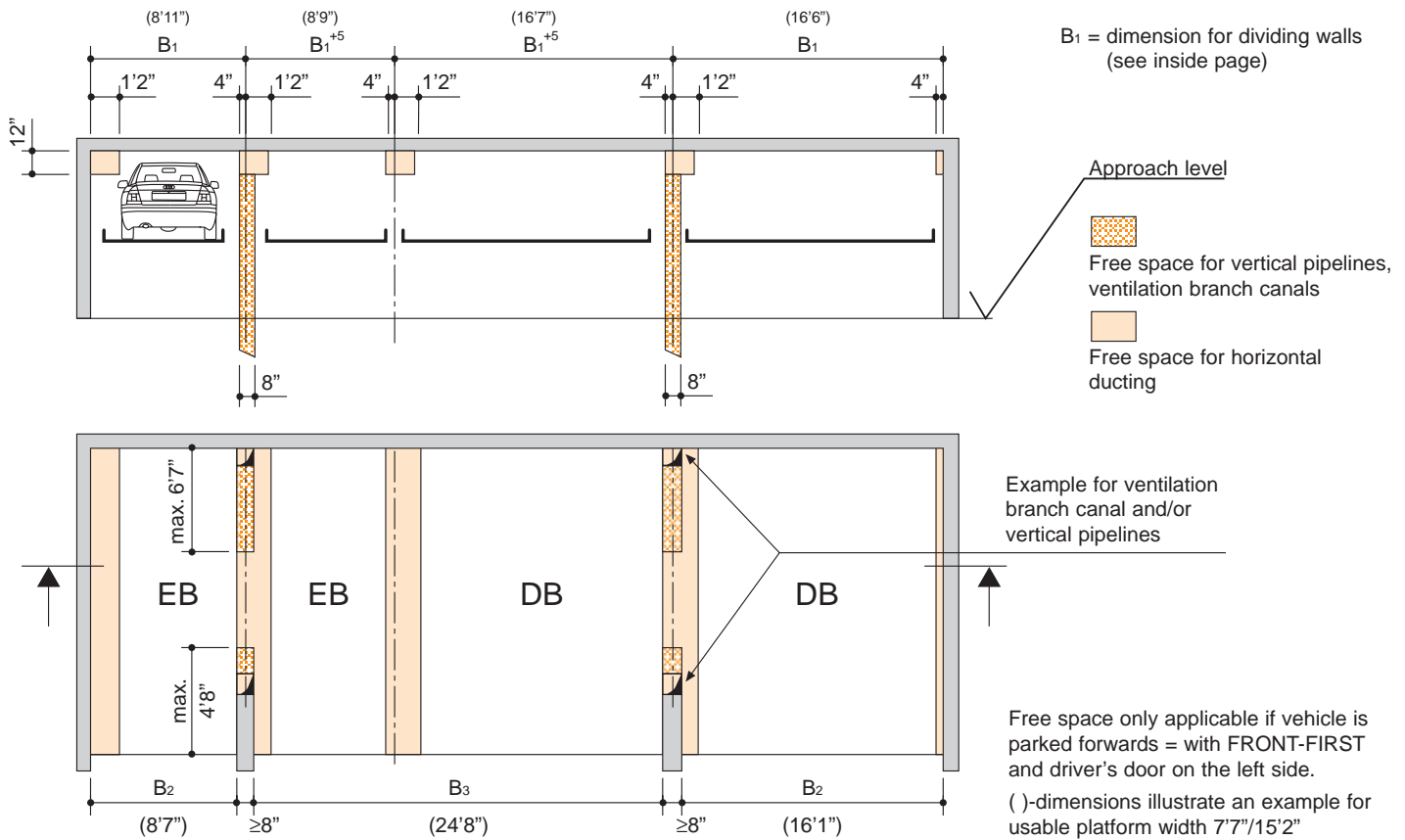
Installation Data

Series G 63-480

Garage ventilation, drainage, heating, electrical wiring

Free space for longitudinal and vertical ducts (e.g. ventilation)

dimensions in inch



Electrical Data

dimensions in inch

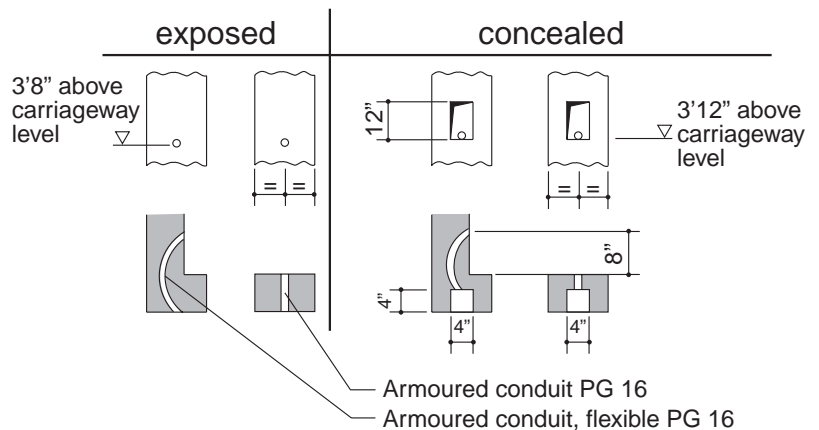
Generally to be effected by customer:

- electrical wiring 5 x 2.5 mm² per unit
- delayed-action mains fuse 3 x 16 A per unit
- "EMERGENCY-OFF"/main power supply switch, lockable, per unit

Electrical wiring:

Electrical wiring is carried out by the customer or by the local agency of Klaus in accordance with our circuit diagram/s. (Please see the respective quotation at hand)

Cable conduits and recesses for operating element



Technical Data as of issue 06/98:

We reserve the right to change this specification without further notice.

Units

Low-noise power units mounted to rubber-bonded-to-metal mountings are installed. Nevertheless we recommend to build the parking system's garage separately from the dwelling house.

Safety railings

Any safety railings which become necessary due to the installation of the system at access points, walkways, traffic lanes etc. will have to be provided/paid for by the customer.

The following documents can be supplied upon request:

- wall recess plans
- test sheet on airborne and solid-borne sound

Stamp