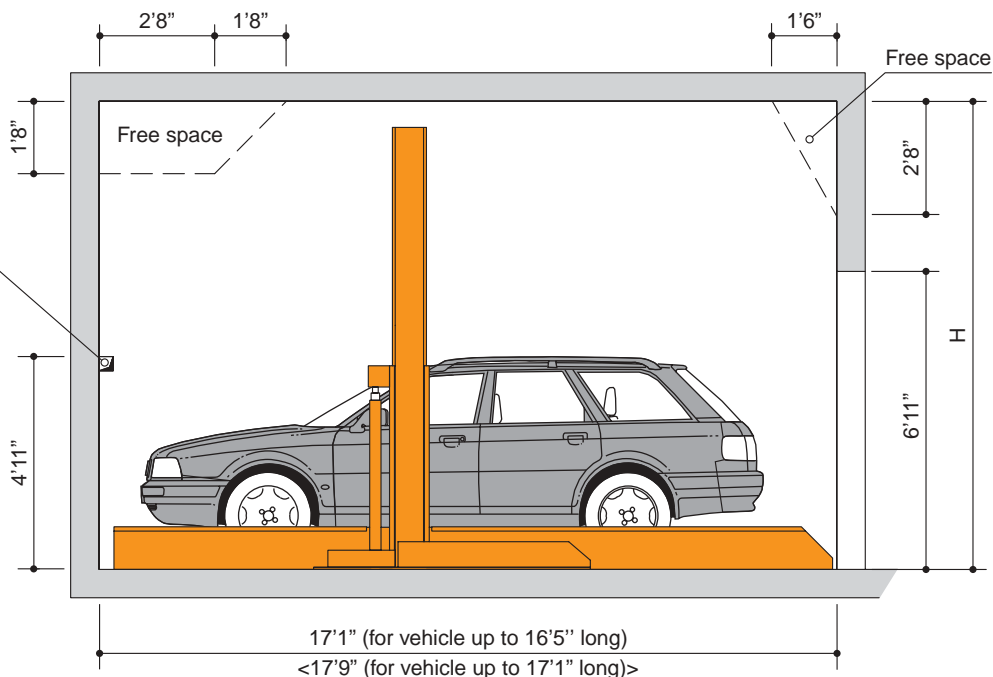


**Basement garage**  
 Space requirements are minimum finished dimensions in inch

for dividing walls:  
 cutting through 10 x 10 (for ducts for cables, pipes etc.) of dividing wall

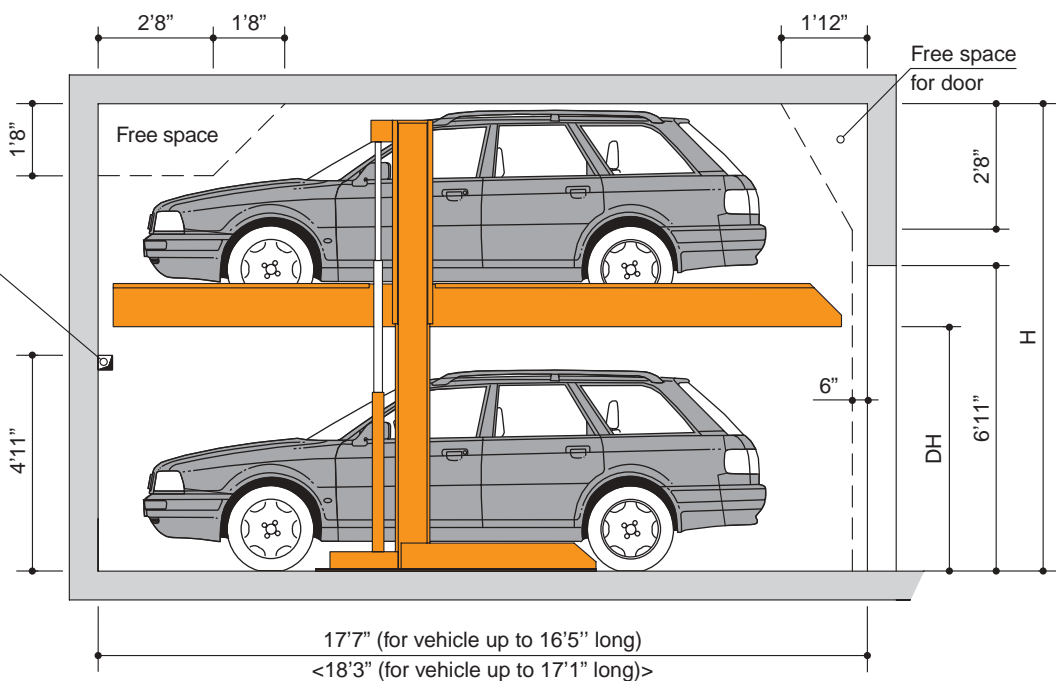
**PLEASE NOTE:** Before lowering the platform the lower vehicle must be removed.



**Garage with door in front of the car parking system**  
 Space requirements are minimum finished dimensions in inch

for dividing walls:  
 cutting through 10 x 10 (for ducts for cables, pipes etc.) of dividing wall

**PLEASE NOTE:** Before lowering the platform the lower vehicle must be removed.



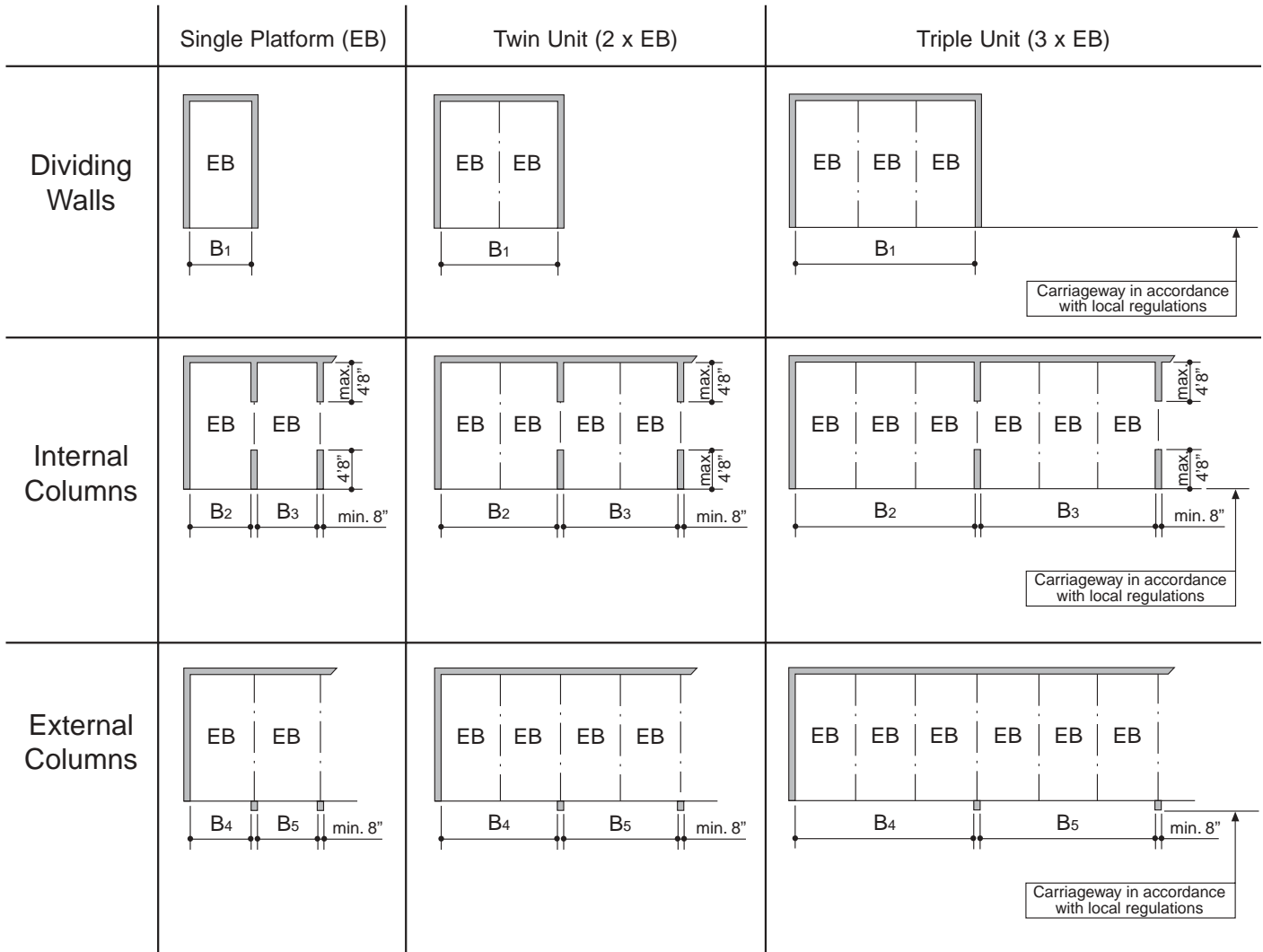
Type	H	DH	Suitable for	Maximum vehicle dimensions
<b>G 61-160</b>	<b>10'6"</b>	<b>5'3"</b>	upper: standard passenger cars & station wagons, max. veh. height 4'11" lower: standard passenger cars & station wagons, max. veh. height 4'11"	Length 16'5" <17'1"> Height see "Suitable for" Width 6'3" Weight 2,000 kg Wheel load 500 kg
<b>G 61-170</b>	<b>10'10"</b>	<b>5'8"</b>	upper: standard passenger cars & station wagons, max. veh. height 4'11" lower: standard passenger cars & station wagons, max. veh. height 5'3"	
<b>G 61-180</b>	<b>11'2"</b>	<b>5'11"</b>	upper: standard passenger cars & station wagons, max. veh. height 4'11" lower: standard passenger cars & station wagons, max. veh. height 5'8"	
<b>G 61-190</b>	<b>11'6"</b>	<b>6'3"</b>	upper: standard passenger cars & station wagons, max. veh. height 4'11" lower: standard passenger cars & station wagons, max. veh. height 5'12"	
<b>G 61-200</b>	<b>11'10"</b>	<b>6'7"</b>	upper: standard passenger cars & station wagons, max. veh. height 4'11" lower: standard passenger cars & station wagons, max. veh. height 6'3"	
<b>G 61-210</b>	<b>12'2"</b>	<b>6'11"</b>	upper: standard passenger cars & station wagons, max. veh. height 4'11" lower: standard passenger cars & station wagons, max. veh. height 6'7"	

If dimension height "H" is increased by customer, correspondingly higher vehicles may be parked on the upper platform(s).

# Widths – Basement Garage

## Series G 61 (Horizontal)

All space requirements are minimum finished dimensions in cm



	Usable Platform Width	Dividing Walls B <sub>1</sub>	Internal Columns		External Columns	
			B <sub>2</sub>	B <sub>3</sub>	B <sub>4</sub>	B <sub>5</sub>
EB	7'7"	8'7"	8'5"	8'3"	8'3"	7'11"
	7'11"	8'11"	8'9"	8'7"	8'7"	8'3"
	8'3"	9'3"	9'1"	8'11"	8'11"	8'7"
2 x EB	7'7"	17'1"	16'11"	16'9"	16'9"	16'6"
	7'11"	17'9"	17'7"	17'5"	17'5"	17'1"
	8'3"	18'5"	18'3"	18'1"	18'1"	17'9"
3 x EB	7'7"	25'8"	25'6"	25'4"	25'4"	24'12"
	7'11"	26'7"	26'5"	26'3"	26'3"	25'12"
	8'3"	27'7"	27'5"	27'3"	27'3"	26'11"

Standard width = parking space width 7'7"

**PLEASE NOTE:**

- End parking spaces are generally more difficult to drive into. Therefore we recommend for end parking spaces our wider platforms.
- Parking on standard width platforms with larger vehicles may make getting into and out of the vehicle difficult. This depends on type of vehicle, approach and above all on the individual driver's skill.

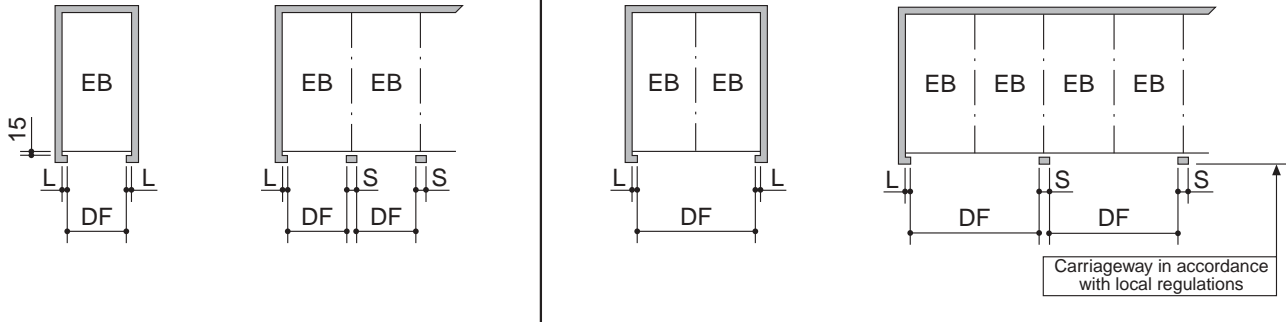
# Widths – Garage with door in front of the car parking system

**Series G 61  
(Horizontal)**

All space requirements are minimum finished dimensions in inch

Single Platform (EB)

Twin Unit (2 x EB)

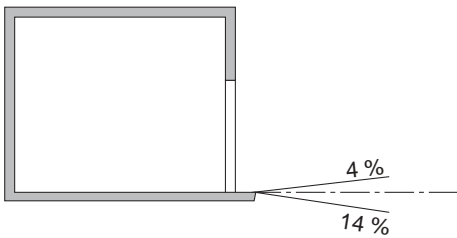


	Usable Platform Width	DF	L	S
EB	7'7"	7'10"	5"	10"
	7'11"	8'3"	5"	10"
	8'3"	8'3"	6"	12"
2 x EB	7'7"	15'7"	9"	1'6"
	7'11"	16'6"	8"	1'4"
	8'3"	17'1"	8"	1'4"

DF = door entrance width

Door dimensions require coordination with door supplier.

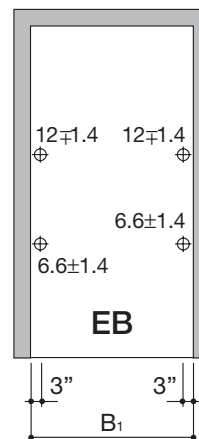
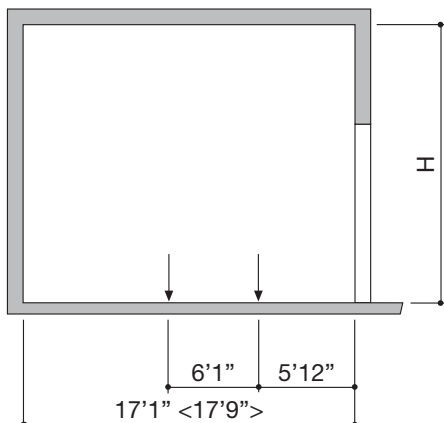
## Approach



These illustrated maximum approach angles must **NOT** be exceeded. Incorrect approach angles will cause **SERIOUS MANEOUVRING & POSITIONING PROBLEMS** on the parking system for which the local agency of Klaus accepts no responsibility.

## Load plan

forces in kN  
dimensions in inch



Units are bolted to the floor. Drilling depth approx. 6"

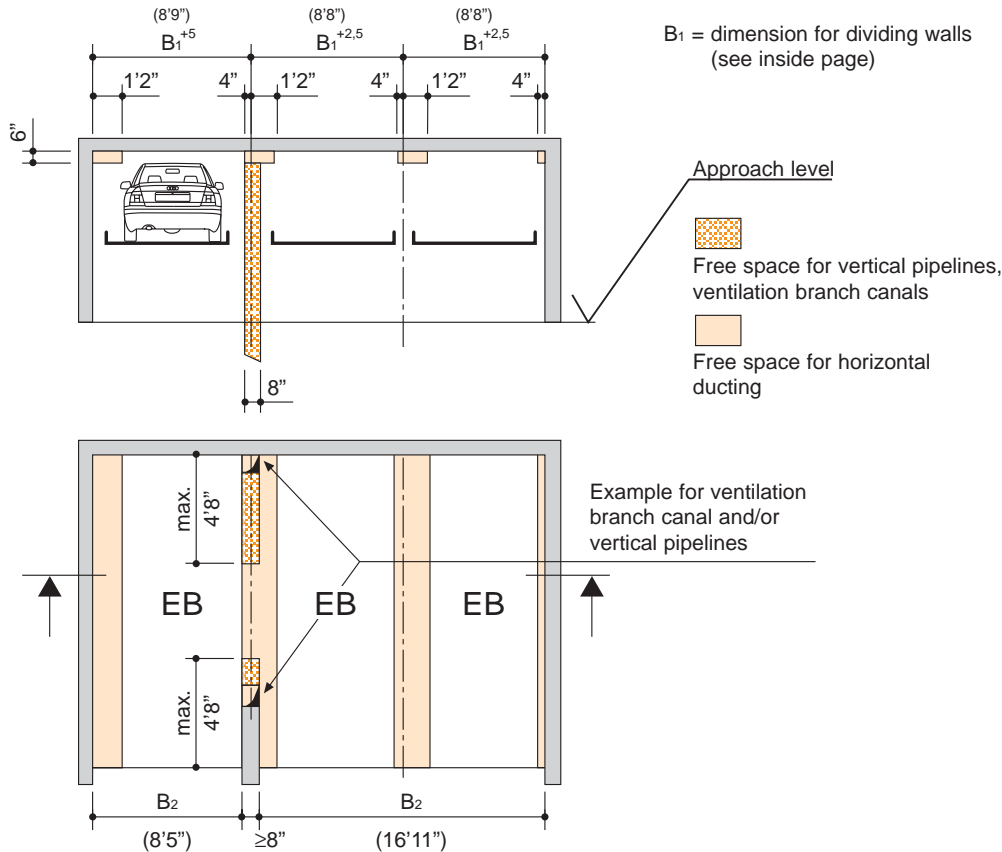
## Installation Data

Garage ventilation, drainage, heating, electrical wiring

## Series G 61 (Horizontal)

### Free space for longitudinal and vertical ducts (e.g. ventilation)

dimensions in inch



Free space only applicable if vehicle is parked forwards = with FRONT FIRST and driver's door on the left side.

( )-dimensions illustrate an example for usable platform width 7'7"

## Electrical Data

dimensions in inch

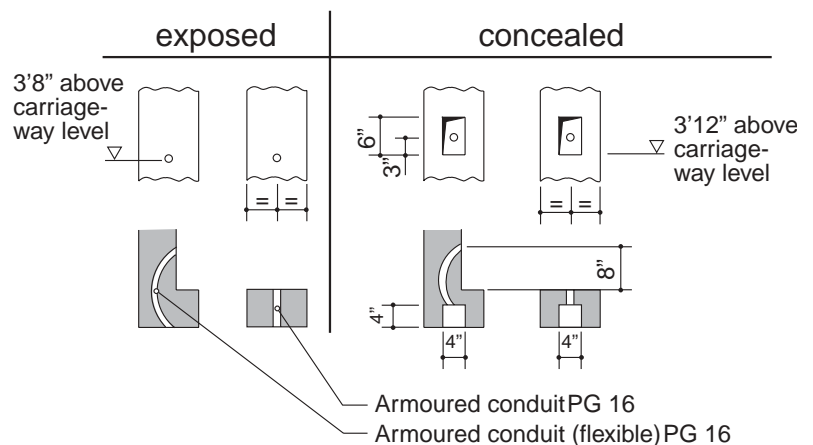
### Generally to be effected by customer:

- electrical wiring 5 x 2.5 mm<sup>2</sup> per unit
- delayed-action mains fuse 3 x 16 A per unit
- "EMERGENCY-OFF"/main power supply switch, lockable, per unit

### Electrical wiring:

Electrical wiring is carried out by the customer or by the local agency of Klaus in accordance with our circuit diagram/s. (Please see the respective quotation at hand)

### Cable conduits and recesses for operating element



### Technical Data as of issue 06/98:

We reserve the right to change this specification without further notice.

### Units

Low-noise power units mounted to rubber-bonded-to-metal mountings are installed. Nevertheless we recommend to build the parking system's garage separately from the dwelling house.

### Safety railings

Any safety railings which become necessary due to the installation of the system at access points, walkways, traffic lanes etc. will have to be provided/paid for by customer.

### The following documents can be supplied upon request:

wall recess plans  
test sheet on airborne and solid-borne sound

Stamp