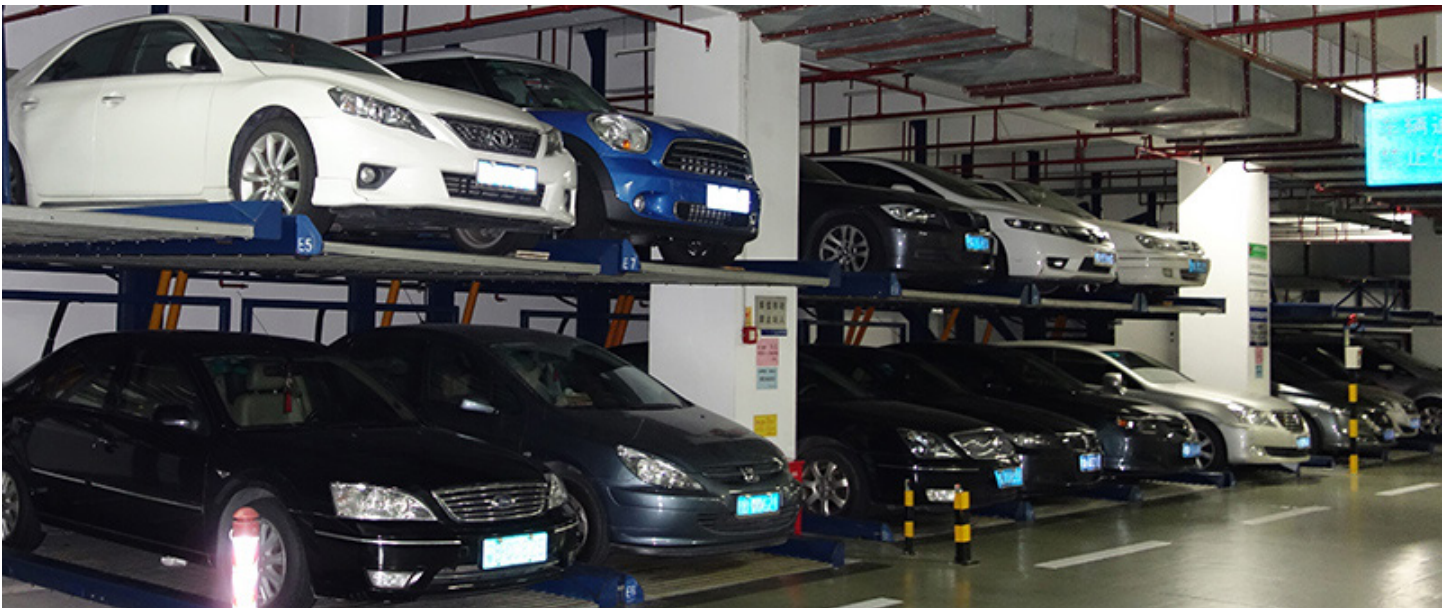


MORE PARKING IN LESS SPACE



PUZZLE

Often called Lift & Slide, each space is independently accessible and can be built up to 6-levels.

Our **Puzzle** parking system design has a structure that enables the use of all parking entrances and exits on the ground level. The parking pallet moves left, right, upward, and downward and has always a minimum of one empty slot for movement. Car parkers can have multiple levels above, pit-style below, or a combination of both.

We Listen. We Respond. We Deliver.

Parkmatic designs, manufactures, services, and installs automated and mechanical parking systems. This technology is designed to combat the growing problem of efficiently managing automobiles in areas where congestion, zoning, and crime are problems, and land is scarce and expensive.

FEATURES AND BENEFITS



ENVIRONMENTALLY FRIENDLY

Less pollution, no exhaust fumes driving up and down aisles and ramps looking for a spot.



LOWER CONSTRUCTION COSTS

Less excavation costs and reduced floor slabs.



LAND SAVINGS

Automated parking systems use 30-70% less land than needed versus a conventional garage.



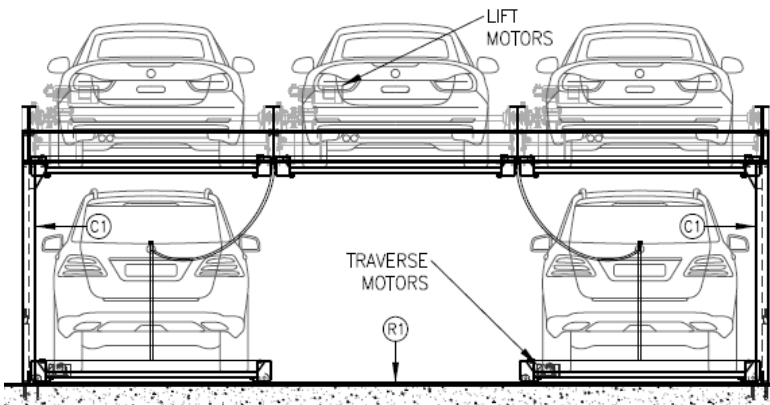
LOW MAINTENANCE

Operation costs are low and requires less energy to run, usually ~1kw per cycle time.

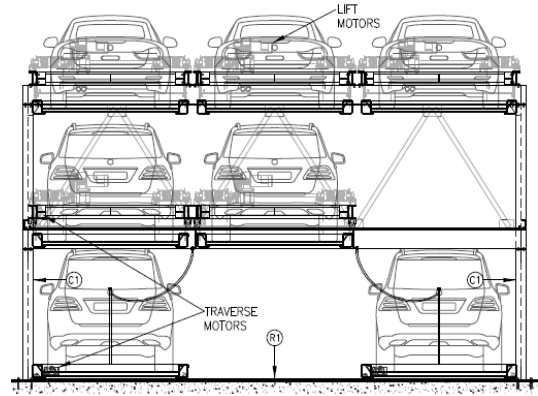


INCREASED RENTABLE AREAS

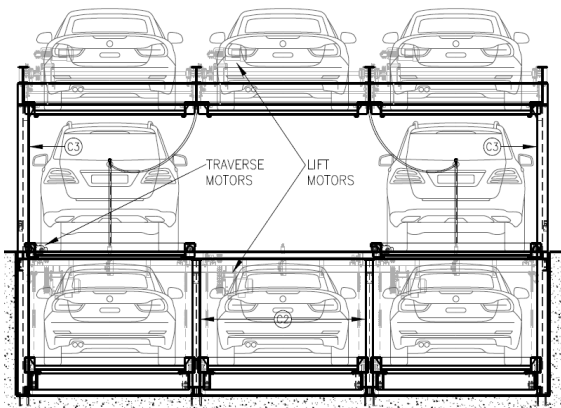
Gain back real estate for rentable areas or other amenities by only using half the space.



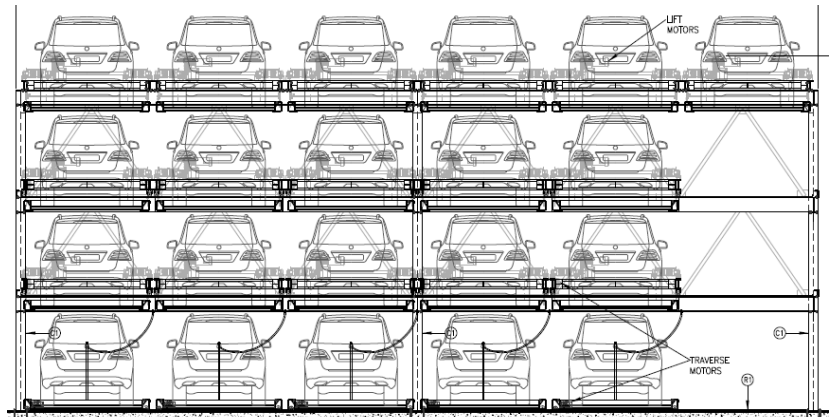
2-Level Puzzle



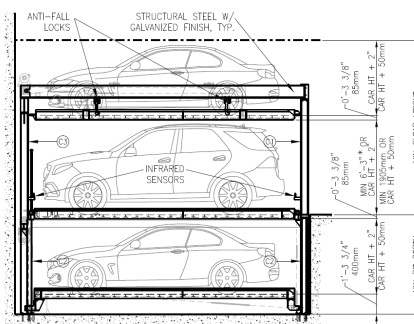
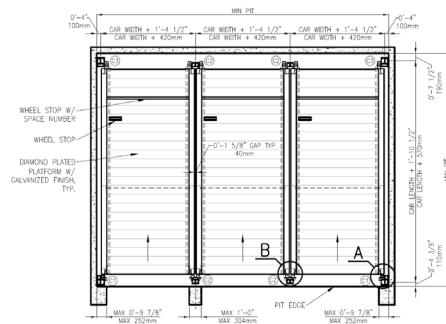
3-Level Puzzle



3-Level Puzzle with a Pit



4-Level Puzzle



SPECIFICATIONS	
Power Requirements	AC220V / 3P / 50 AMP
Traverse Motor	0.2Kw
Lift Motor	3.7Kw
Noise Level	<60dB
Max Queue Time	45 sec - 60 sec



Multifamily Development | Astoria, NY

3-Level System | 14 Vehicles

There are two 3-Level systems with 7 spaces each in a tandem configuration creating 14 spaces, and is being used for residential parking in an apartment complex in Astoria, New York.