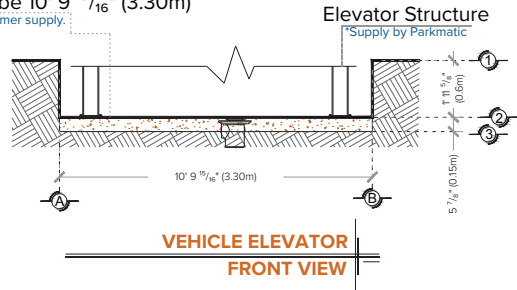


## General Notes:

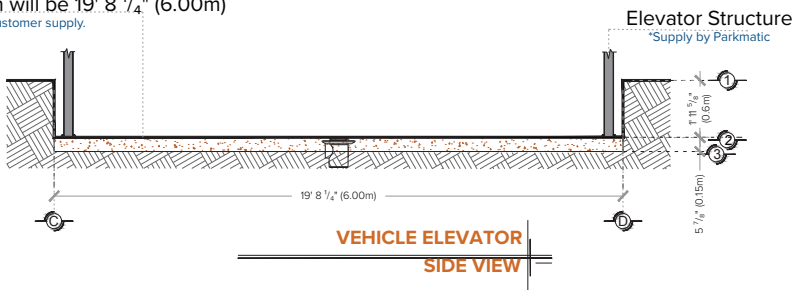
1. THIS DRAWING IS THE PROPERTY OF PARKMATIC AND IT MAY NOT BE REPRODUCED IN WHOLE OR PART OR USED FOR THE MANUFACTURE OF ANY ARTICLE WITHOUT PRIOR WRITTEN CONSENT.
2. WORK TO FIGURED DIMENSIONS ONLY.
3. THIS DRAWING IS TO BE READ IN CONJUNCTION WITH ALL RELEVANT ARCHITECT'S AND ENGINEER'S DRAWINGS AND SPECIFICATIONS.

## Key Notes:

Pit width will be 10' 9 <sup>15</sup>/<sub>16</sub>" (3.30m)  
\* Customer supply.



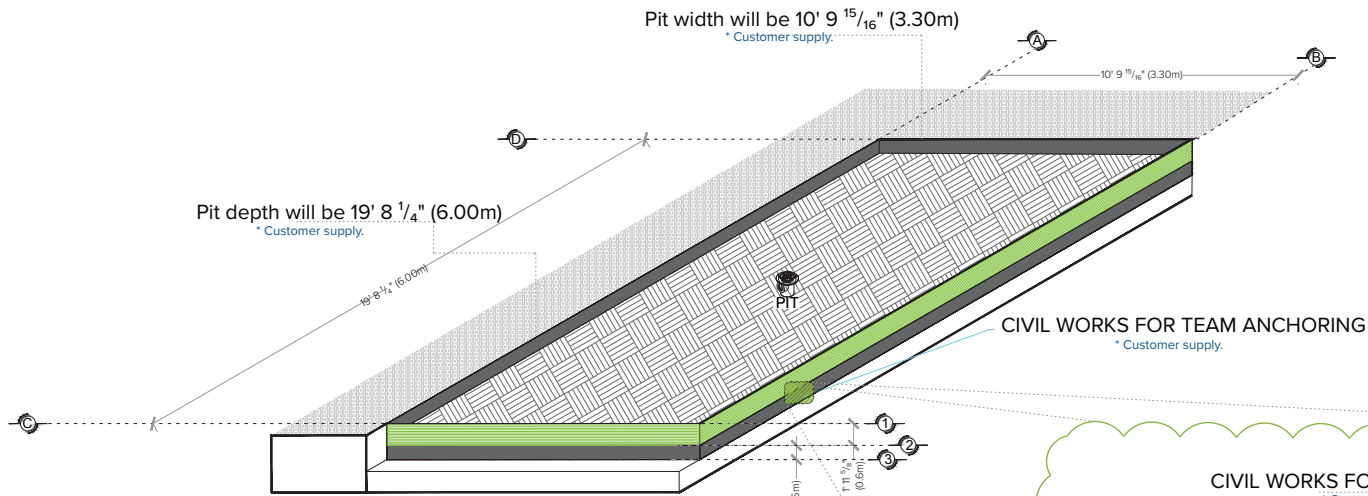
Pit depth will be 19' 8 <sup>1</sup>/<sub>4</sub>" (6.00m)  
\* Customer supply.



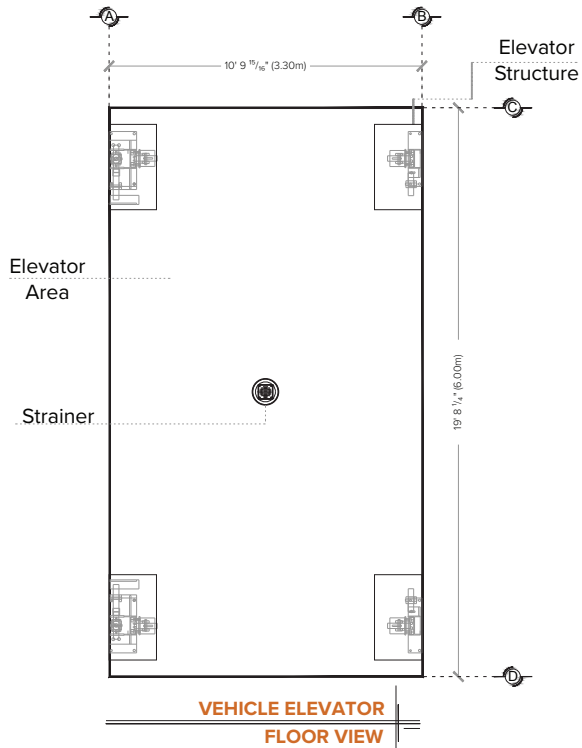
By security reason for possible accumulations of water, such as floods or leaks, the installation of an output of drain pipe (strainer) for dislodging the water that could store in the pit, the pipe is connected to the drainage network or areas green according to the customer's decision.

Pit width will be 10' 9 <sup>15</sup>/<sub>16</sub>" (3.30m)  
\* Customer supply.

Pit depth will be 19' 8 <sup>1</sup>/<sub>4</sub>" (6.00m)  
\* Customer supply.



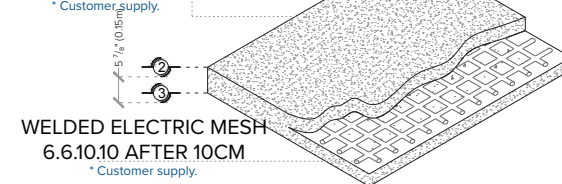
### VEHICLE ELEVATOR ISOMETRIC



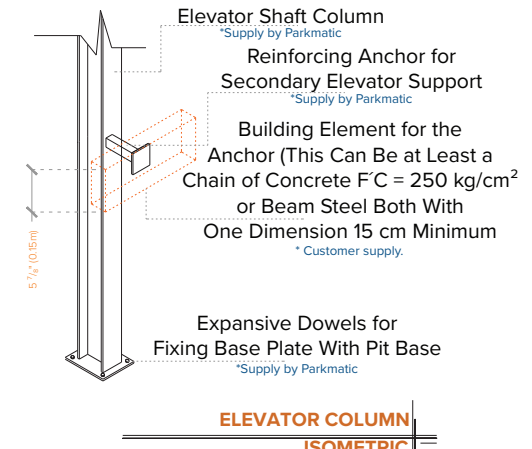
### VEHICLE ELEVATOR FLOOR VIEW

### CIVIL WORKS FOR TEAM ANCHORING

CIVIL WORKS FOR TEAM ANCHORING  
SIGN OF CONCRETE WITH A  
F'C RESISTANCE = 250KG / CM<sup>2</sup>  
\* Customer supply.



### FIRM ASSEMBLY ISOMETRIC



### ELEVATOR COLUMN ISOMETRIC

The wall must support and firm the elevator structure, it is required that the area where the supports are placed is a complete concrete wall, if not, the area of the connection must be using a girder or closing chain reinforced with a minimum cant of 15cm. If possible they should be placed on the wall, in the area where the supports will be located 5"x 4" x <sup>3</sup>/<sub>8</sub>" steel plates for better fixing of the structure, which will be placed on the time of casting the concrete element. If the plates are not placed, expansive dowels will be placed, which, like the plates, must go on a concrete wall or item. Either procedure will be used in the upper anchorage and in the mezzanines existing.

## NOTES

- Elevator clearance dimensions shall match the mezzanine dimensions and each one of the stations, everything is plumb and level.

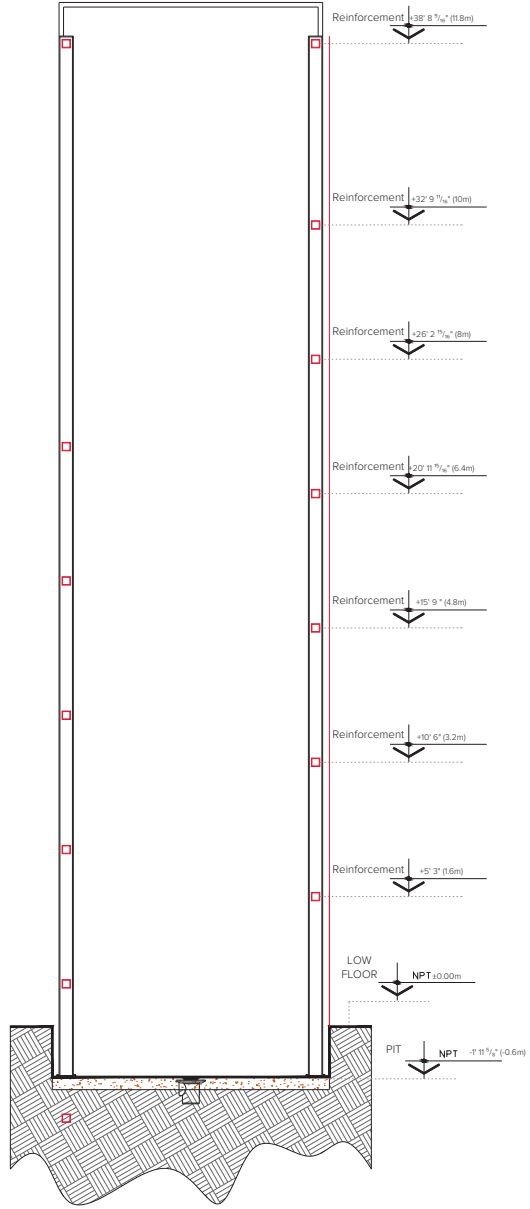
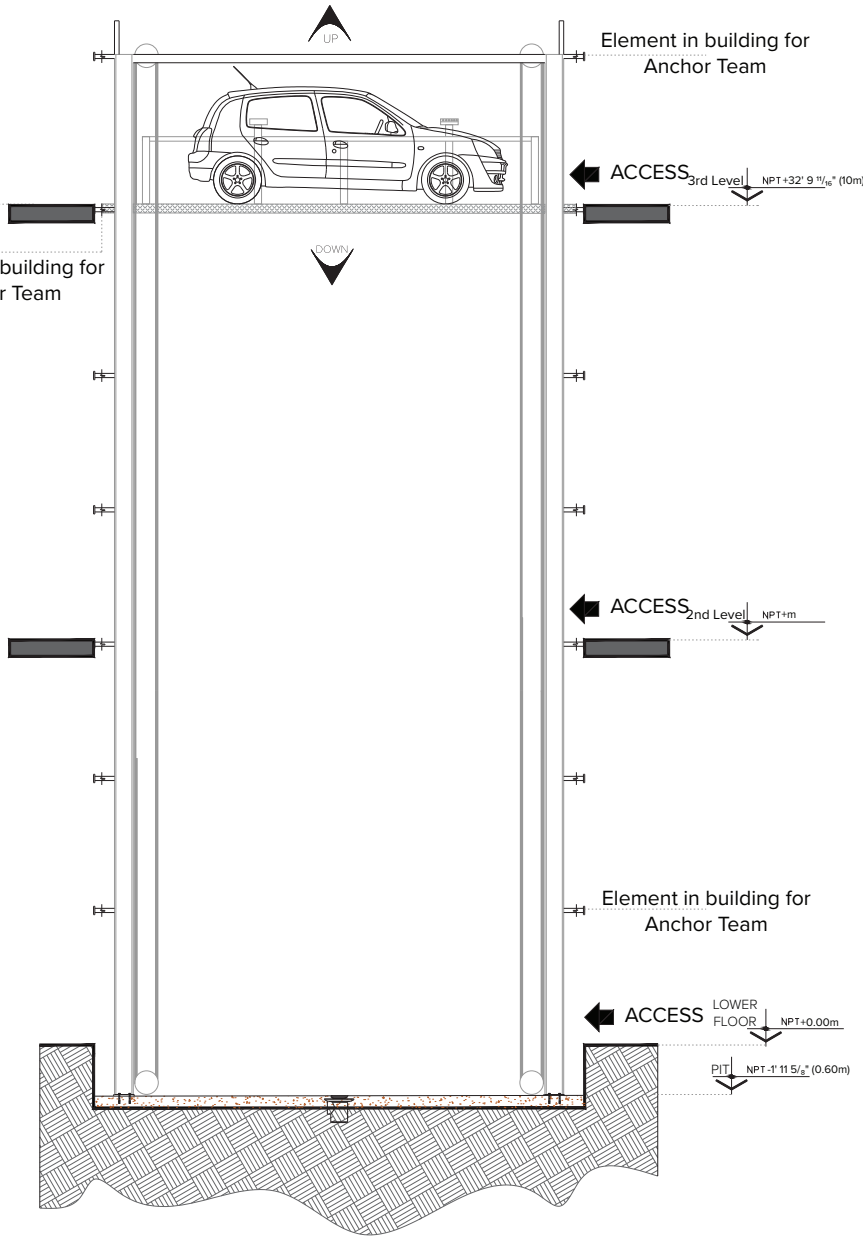
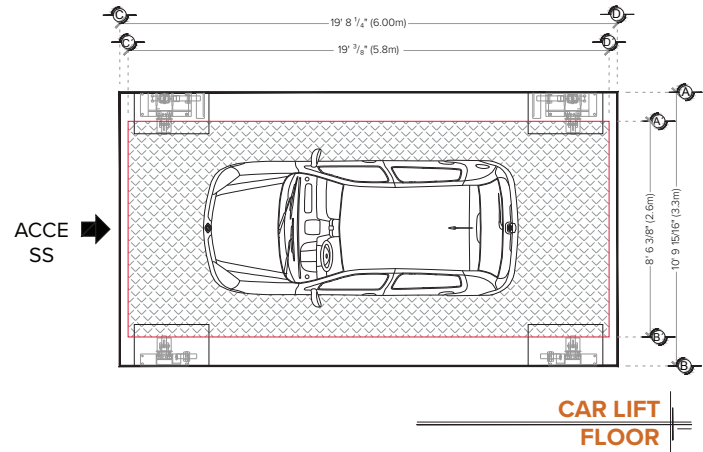
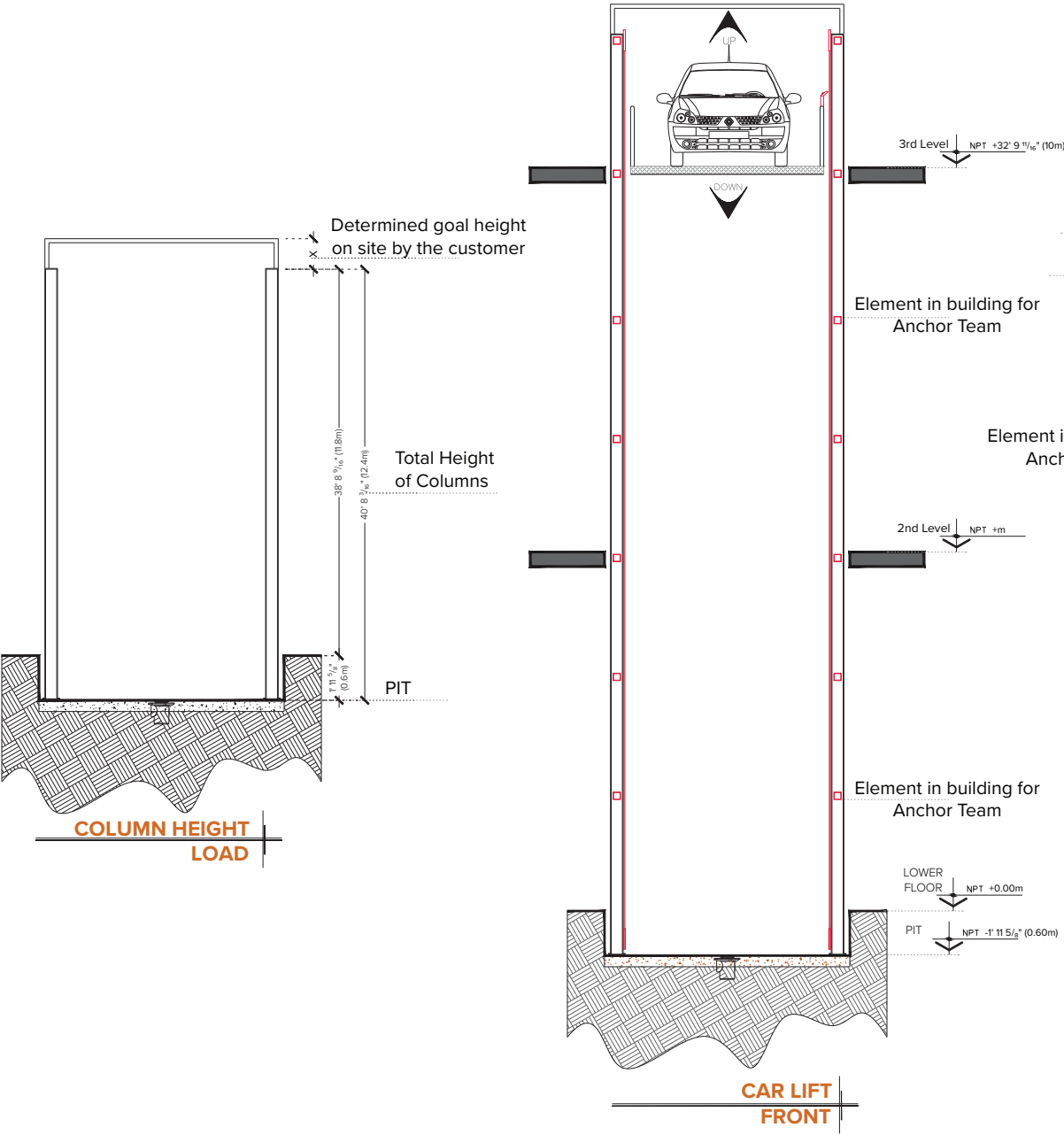
3		
2		
1		
REV	DESCRIPTION:	DATE:

**PARKMATIC**  
NEW YORK OFFICE, USA  
1129 Northern Blvd., #452  
Manhasset, NY 11030  
P: 1-800-422-5438  
W: www.parkmatic.com

CLIENT:
PROJECT:
ADDRESS:

TITLE: VEHICLE ELEVATOR			
SCALE: N/A	DATE: 05/08/2020	DRAWN:	CHECKED: MW
DRAWING NO: SK/01		SHEET: 1 OF 3	

EQUIPMENT DESCRIPTION



- General Notes:
- THIS DRAWING IS THE PROPERTY OF PARKMATIC AND IT MAY NOT BE REPRODUCED IN WHOLE OR PART OR USED FOR THE MANUFACTURE OF ANY ARTICLE WITHOUT PRIOR WRITTEN CONSENT.
  - WORK TO FIGURED DIMENSIONS ONLY.
  - THIS DRAWING IS TO BE READ IN CONJUNCTION WITH ALL RELEVANT ARCHITECT'S AND ENGINEER'S DRAWINGS AND SPECIFICATIONS.

Key Notes:

3		
2		
1		
REV	DESCRIPTION:	DATE:

**PARKMATIC**  
NEW YORK OFFICE, USA  
1129 Northern Blvd., #452  
Manhasset, NY 11030  
P: 1-800-422-5438  
W: www.parkmatic.com

CLIENT: \_\_\_\_\_

PROJECT: \_\_\_\_\_

ADDRESS: \_\_\_\_\_

TITLE: VEHICLE ELEVATOR			
SCALE: N/A	DATE: 05/08/2020	DRAWN: _____	CHECKED: MW
DRAWING NO: SK/01		SHEET: 2 OF 3	

HYDRAULIC UNIT

For the operation of the elevator, a hydraulic unit is necessary, which does notice contemplated within the elevator clearing, the customer is given the option to decide the location of the unit. Niche is required to house the unit hydraulics and electrical control having access for maintenance.

The hydraulic unit and electrical control must be installed and located in a place free of dust, liquids and inclement weather, preventing contamination of the oil and equipment warranty is forfeited.

The tubing path must not be greater than 5.00 linear meters 3-phase 220 Vac power supply, with neutral and earth ground, with a thermomagnetic break of protection 40 Amp, exclusive for the elevator.

- Wire gauge 8 AWG for distances up to 10.00m.
- 6 AWG gauge for distances up to 15.00m.
- For distances greater than 15.00m consider the current calculation to avoid tension fall completely straight pipe of Ø 3" for channeling the hydraulic system.

For security, it should not be manipulated by unauthorized personnel. By ignoring the indications already dictated and the equipment has a fault, Parkmatic will not be responsible for these, in addition to the guarantee year not would have coverage for these damages.

HYDRAULIC UNIT DESCRIPTION	
HYDRAULIC UNIT	10HP
FEEDING	220 VCA
NUMBER OF PHASES	3
CONSUMPTION AMPS	27
CONSUMPTION WATTS	7.4 KW
TYPE OF OIL	ISO 68

HYDRAULIC UNIT  
10 HP

INSTALLATION REQUIREMENTS

The pit will be in optimal conditions (no waterlogging inside the pit, area free of any object or materials in work, free access to transport the equipment to the installation).

For the installation of the elevator, it is necessary to have the energy to 220V to connect a welding machine, to 2 phases and must have a consumption capacity of 60 Amp. Free. If you do not have this power, you cannot install the elevator on the agreed date.

And a new available installation date will be given, according to our installation schedule.

The civil work required by Parkmatic, will have to be ready on the agreed date to not reschedule the equipment installation.

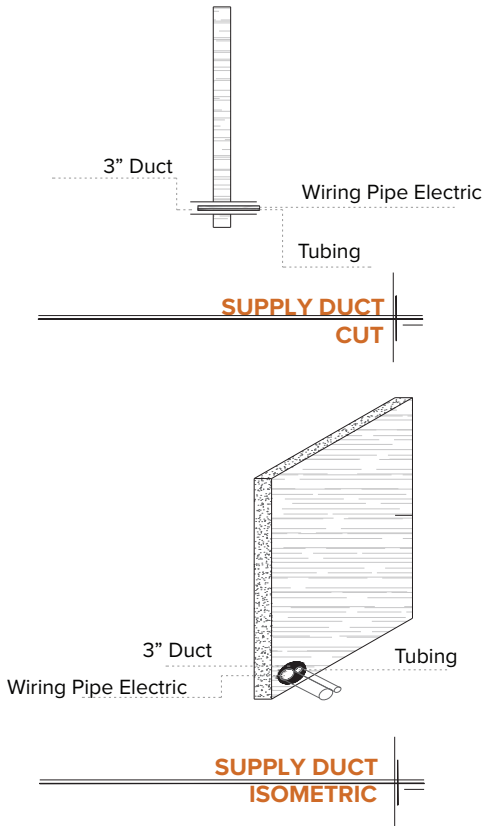
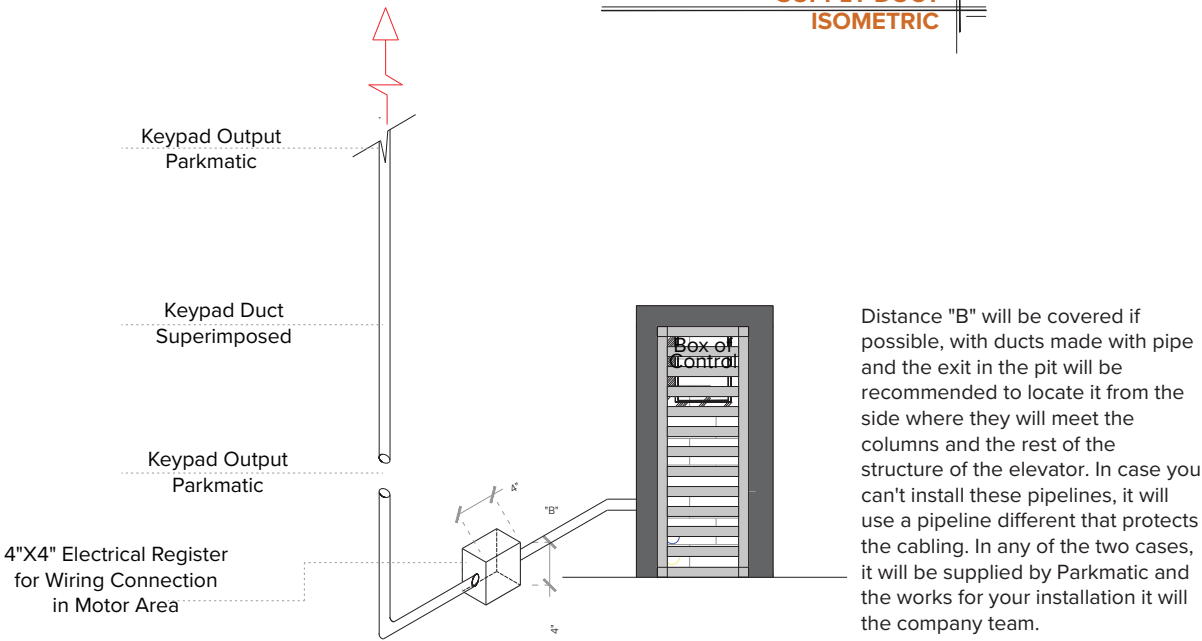
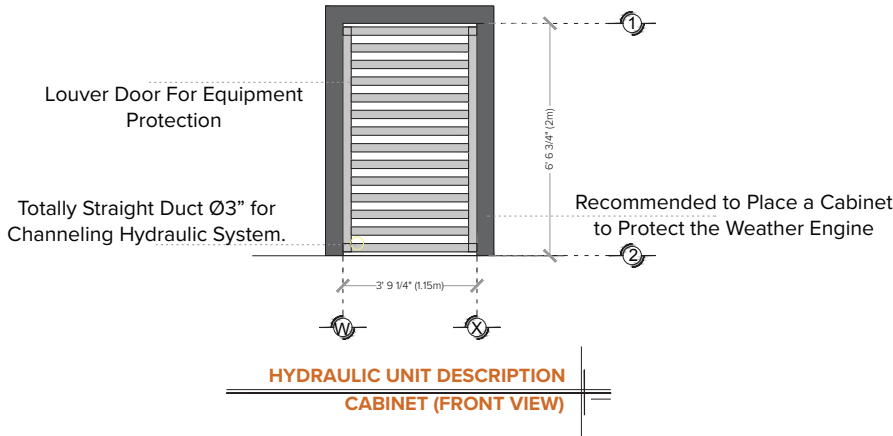
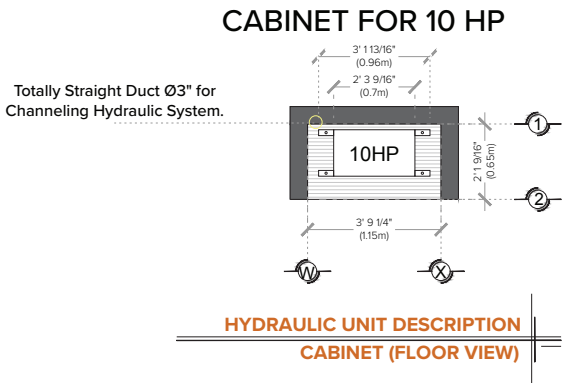
Consider access for our Parkmatic equipment, since these are armed and in case there is no space to be able to access without problems, discuss this with your designated seller, and thus take the necessary precautions.

ELEVATOR SAFETY

Safety mechanisms in elevators are one fundamental part of the placement and commissioning March of our teams.

So, every time you use an elevator take into account Some points basics.

- Do not take hands, feet, or any object out the elevator when it is in operation.
- Do not operate the lift when there is a hydraulic fluid leak.
- Verify that the doors are tightly closed.
- Respect the indications without exceeding your capacity of weight.
- Do not operate the equipment without first having been delivered by a Parkmatic specialist.
- Never use the elevator in case of fire.
- Do not operate the lift in case the cable's steel found



General Notes:

1. THIS DRAWING IS THE PROPERTY OF PARKMATIC AND IT MAY NOT BE REPRODUCED IN WHOLE OR PART OR USED FOR THE MANUFACTURE OF ANY ARTICLE WITHOUT PRIOR WRITTEN CONSENT.

2. WORK TO FIGURED DIMENSIONS ONLY.

3. THIS DRAWING IS TO BE READ IN CONJUNCTION WITH ALL RELEVANT ARCHITECT'S AND ENGINEER'S DRAWINGS AND SPECIFICATIONS.

Key Notes:

3		
2		
1		
REV	DESCRIPTION:	DATE:

Parkmatic

NEW YORK OFFICE, USA

1129 Northern Blvd., #452

Manhasset, NY 11030

P: 1-800-422-5438

W: www.parkmatic.com

CLIENT:

PROJECT:

ADDRESS:

TITLE: VEHICLE ELEVATOR

SCALE: N/A

DATE: 05/08/2020

DRAWN:

CHECKED: MW

DRAWING NO: SK/01

SHEET: 1 OF 3